

# In vitro Assessment of Antioxidant, Antimicrobial, Cytotoxic, Anti-inflammatory, and Antidiabetic Activities of *Campanula retrorsa* Crude Extracts

Josiane Alhage<sup>1,2</sup>, Hoda Elbitar<sup>1</sup>, Samir Taha<sup>1,3</sup>, Thierry Benvegnu<sup>2</sup>

<sup>1</sup>AZM Centre for Research in Biotechnology and Its Applications, Laboratory of Applied Biotechnology for Biomolecules, Biotherapy and Bioprocess, Lebanese University, Tripoli, <sup>2</sup>Faculty of Public Health, Rafic Hariri Campus, Lebanese University, Hadath, Beirut, Lebanon, <sup>3</sup>Univ Rennes, ENSCR, CNRS, ISCR (Institut des Sciences Chimiques de Rennes), UMR 6226, 35000 Rennes, France

## ABSTRACT

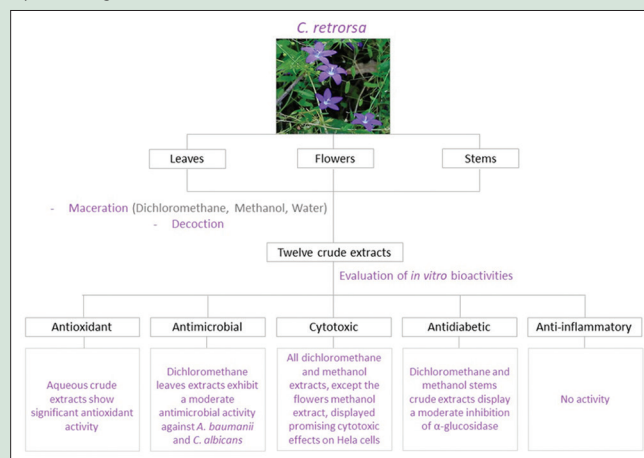
**Background:** *Campanula retrorsa* belongs to the Campanulaceae family and the *Campanula* genus. The species of this latter are traditionally known for their antiallergic, spasmolytic, antiplogistic, antioxidant, and antiviral properties. Few studies were realized on the bioactivity of *Calicotome villosa* crude extracts. **Objective:** The objective was to investigate, for the first time, the antioxidant, antimicrobial, cytotoxic, antidiabetic, and anti-inflammatory potentials of dichloromethane, methanol, and aqueous crude extracts of *C. retrorsa* leaves, flowers, and stems. **Materials and Methods:** The antioxidant activity of different crude extracts was determined using the free radical, 1, 1-diphenyl-2-picrylhydrazyl. Antimicrobial activity against three Gram-positive (*Staphylococcus aureus*, *Bacillus cereus*, and *Enterococcus faecium*), two Gram-negative (*Escherichia coli*, *Pseudomonas aeruginosa*, and *Acinetobacter baumannii*) bacterial strains and a fungal strain (*Candida albicans*) was evaluated in a plate-hole diffusion assay. Cytotoxic activity of *C. retrorsa* dichloromethane and methanol crude extracts on Hela cells was realized using the Trypan blue dye exclusion technique. Antidiabetic activity against  $\alpha$ -glucosidase and anti-inflammatory activity against bee venom phospholipase A2 (PLA2) were assessed using a colorimetric test. **Results:** Leaf and flower aqueous extracts possessed very high radical scavenging activity = 90%. The dichloromethane extracts of leaves and flowers were the most active against *A. baumannii* and *C. albicans*. After 48 h of treatment, all extracts except the methanol flower extract showed an inhibition of 90% of cell growth at 2 mg/mL. Dichloromethane and methanol stem crude extracts showed a modest inhibition of  $\alpha$ -glucosidase. While no inhibition of the PLA2 was displayed by any of the tested extracts. **Conclusion:** Obtained results give an overall view on *C. retrorsa* crude extracts' bioactivities.

**Key words:** Antidiabetic activity, bioactivity, *Campanula retrorsa*, crude extracts, cytotoxicity

## SUMMARY

- The results show that all *Campanula retrorsa* aqueous crude extracts have significant antioxidant activity
- C. retrorsa* dichloromethane leaf extracts exhibit a moderate antimicrobial activity against *Acinetobacter baumannii* and *Candida albicans*
- All dichloromethane and methanol extracts, except the flowers methanol extract, displayed promising cytotoxic effects on Hela cells
- Dichloromethane and methanol extracts show no anti-inflammatory activity

- Dichloromethane and methanol stems crude extracts display a moderate inhibition of the enzyme  $\alpha$ -glucosidase at 2 mg/mL
- C. retrorsa* species could be used as a possible new source of natural cytotoxic agents.



**Abbreviations Used:** PLA2: Phospholipase A2; DPPH: 2, 2-Diphenyl-1-picrylhydrazyl; CFU: Colony-forming unit; DMSO: Dimethyl sulfoxide; IZ: Inhibition zone; DMEM: Dulbecco Modified Eagle Medium; NaCl: Sodium Chloride; NaOH: Sodium Hydroxide; U: Enzyme Unit; CMUL: Microbiological Collection of the Lebanese University; ATCC: American Type Culture Collection; EC: Enzyme Commission number; CH<sub>2</sub>Cl<sub>2</sub>: Dichloromethane; CH<sub>3</sub>OH: Methanol; H<sub>2</sub>O: Water.

## Correspondence:

Prof. Thierry Benvegnu,  
Univ Rennes, ENSCR, CNRS, ISCR (Institut des Sciences Chimiques de Rennes), UMR CNRS 6226: Sciences Chimiques de Rennes 11, Allée de Beaulieu, CS 50837-35708 Rennes, France.  
E-mail: [thierry.benvegnu@ensc-rennes.fr](mailto:thierry.benvegnu@ensc-rennes.fr)  
**DOI:** 10.4103/pr.p\_73\_18

Access this article online

Website: [www.phcogres.com](http://www.phcogres.com)

Quick Response Code:



## INTRODUCTION

The Mediterranean climate in Lebanon favors the growth of a large number of plant species. The Lebanese flora has 2607 species, distributed in 783 genus. Many are used in the traditional medicine and a relatively small number of these species are studied.

The genus *Campanula* belongs to the Campanulaceae family and includes 300 species. All the species are herbaceous. The name refers to bell-shaped, blue flowers of the majority of the species. Most of *Campanula* species grows in Asia, the Black Sea, and Mediterranean

This is an open access journal, and articles are distributed under the terms of the Creative Commons Attribution-NonCommercial-ShareAlike 4.0 License, which allows others to remix, tweak, and build upon the work non-commercially, as long as appropriate credit is given and the new creations are licensed under the identical terms.

For reprints contact: [reprints@medknow.com](mailto:reprints@medknow.com)

**Cite this article as:** Alhage J, Elbitar H, Taha S, Benvegnu T. In vitro assessment of antioxidant, antimicrobial, cytotoxic, anti-inflammatory, and antidiabetic activities of *Campanula retrorsa* crude extracts. Phcog Res 2018;10:397-403.

regions. According to the study of Tohme 18 *Campanula* species grow in Lebanon.<sup>[1-4]</sup>

The species of *Campanula* genus have been used in traditional medicine for treatment of laryngitis, constipation, warts, tonsillitis, and bronchitis.<sup>[5]</sup> Furthermore, they possess antiallergic, spasmolytic, antiphlogistic, antioxidant, and antiviral properties.<sup>[6-9]</sup> Fresh roots have been chewed for lung and heart problems treatment; their infusions have been used for ear inflammations. The plant decoction has been used in the treatment of sore eyes.<sup>[10]</sup>

Flavonoids, flavones, and anthocyanins such as luteolin, quercetin, kaempferol, luteolin 7-O-rutinoside, luteolin 3',7'-diglucoside, luteolin 7-O-glucoside, quercetin 3-O-glucoside, quercetin 3-O-D galactoside, kaempferol 3-O-β-D glucopyranoside, kaempferol 3-O-β-D galactopyranoside, violdephin, bisdeacylplatyconin, monodeacylcampanin, and campanin have been isolated from *Campanula* genus.<sup>[11-13]</sup>

*Campanula retrorsa* is a green soft plant that can grow between 20 and 100 cm. The stems are very angular and scabrous as well as leaves margins. Lower leaves are obovate, slightly crenate, and briefly petiolate; upper ones are sessile, lanceolate, and acute. The capsules are glabrous and conic. It is surmounted by the lobes of the crescents calyx. The blue-violet flowers bloom between April and May on humid lands in the Mediterranean area.<sup>[4]</sup>

As part of a systematic research study on the constituents and biological activities of Lebanese natural plants, we here examine the antioxidant, antibacterial, and antifungal activities of the dichloromethane, methanol, and aqueous extracts of *C. retrorsa* leaves, flowers, and stems. We also report cytotoxic activity on Hela cell lines, anti-inflammatory activity against phospholipase A2 (PLA2) isolated from bee venom and anti-diabetic activity against α-glucosidase of *C. retrorsa* leaves, flowers, and stems dichloromethane and methanol extracts.

No study has been reported yet on this species.

## MATERIALS AND METHODS

### Materials and reagents

2, 2-Diphenyl-1-picrylhydrazyl (DPPH) (97%), Vitamin C (99%), α-glucosidase from *Saccharomyces cerevisiae* (10.8 U/mg), *p*-nitrophenyl α-d-glucopyranoside (>99%), acarbose (>95%), and PLA2 from *Apis mellifera* (600–2400 U/mg) were purchased from Sigma-Aldrich (Saint-Quentin-Fallavier, France). Manoalide (>98%) was purchased from Abcam (Cambridge, MA, USA). All other chemical reagents that are used in the research were purchased from reliable commercial sources.

### Plant material

The whole plants of *C. retrorsa* were collected in Ardeh, North of Lebanon, in May 2015 and identified by Professors Georges and Henriette Tohme (Professors in natural substances).

The plant material was dried in the shade at room temperature for 2 weeks and stored in a dry place.

### Extraction and isolation

The air-dried parts (leaves, flowers, and stems) of *C. retrorsa* were macerated for 48 h at room temperature by successively dichloromethane, methanol, and water.

Decoctions were prepared by boiling dried plant material, broken into small pieces, in distilled water for 10 min.

Upon extraction, the mixtures were filtered and evaporated. The extracts were stored at 4°C in dark until use.

### Antioxidant assay

The antioxidant activity of *C. retrorsa* different extracts was determined by evaluation of the scavenging effect of these samples on the stable radical DPPH, according to the method described in the literature.<sup>[14,15]</sup> Different concentrations of each sample were prepared in the solvent of extraction (0.3, 0.5, and 1.0 mg/mL). Briefly, 1.0 mL aliquot of each concentration of test sample was added to 1.0 mL of 0.16 mM DPPH methanolic solution. The mixture was vortexed and left at room temperature for 30 min in the dark, then absorbance was read at 517 nm at  $t = 0$  and  $t = 30$  min. The ability to scavenge the DPPH radical was calculated using the following equation:

$$\% \text{ Inhibition} = \frac{(A_{\text{control}} - A_{\text{sample}})}{(A_{\text{control}})} \times 100$$

Where  $A_{\text{control}}$  is the absorbance of the control (DPPH solution without sample), and the  $A_{\text{sample}}$  is the absorbance of the test sample (DPPH solution with test sample) at 517 nm. Triplicate measurements were carried out. Vitamin C was used as positive control.

### Antimicrobial assay

The inhibition zones were determined by whole diffusion by using a cell suspension of about  $1.5 \times 10^6$  colony-forming unit/mL obtained from a McFarland turbidity standard N 0.5. The suspension was standardized by adjusting the optical density to 0.1 at 600 nm (SHIMADZU UV-120-01 spectrophotometer). A hole of 6-mm diameter was then made on the plate (8-mm thick). 50 μL of the different extracts solubilized in dimethyl sulfoxide (DMSO) (for the dichloromethane and methanol extracts) or water (for the aqueous extracts) of different concentrations (1.0, 2.0, and 10.0 mg/mL) was added to each well in the specific position. The negative control (DMSO) and the positive control (antibiotic or antifungal depending on the test) were added in two different wells. The inoculated plates were incubated at 37°C for 24 h. Antimicrobial activity was evaluated by measuring the diameter of the zone of growth inhibition (IZ) around the hole. The assay was repeated twice, and the results recorded as mean IZ were expressed as signs: (–) for not active samples, (+) for samples with 3 mm < IZ < 4 mm, and (++) for samples with IZ > 5 mm.

Tests were performed against six bacterial reference strains: Gram-positive bacteria: *Staphylococcus aureus*, *Bacillus cereus*, and *Enterococcus faecium*, Gram-negative bacteria: *Escherichia coli*, *Pseudomonas aeruginosa*, *Acinetobacter baumannii*, and a yeast: *Candida albicans*. The microorganisms were obtained from the Health and Environment Microbiology laboratory at Azm Center for Research on Biotechnology Sciences and its applications, Tripoli, Lebanon.

### Cytotoxic assay

The cytotoxic activity of *C. retrorsa* dichloromethane and methanol extracts on Hela cells was performed using the Trypan blue dye exclusion technique described by Alhage *et al.*<sup>[16]</sup> Hela cells were grown in Dulbecco's modified Eagle medium supplemented with 10% fetal bovine serum, 2 mM glutamine, and antibiotics. A 100 μL aliquot cell suspension containing  $10^4$  cells was seeded in each well of a 96-well plate and incubated in a humidified atmosphere at 37°C for 24 h. The medium was removed after 24 h, and the cells were then treated with 100 μL of the extracts diluted with DMEM at 2 and 5 mg/mL. The 96 well-plates were further incubated for 24 and 48 h. The Trypan blue dye exclusion test was then performed by adding one part of a 0.4% solution of Trypan blue to one part of cell suspension. The cells were exposed to Trypan blue for 3 min at room temperature and the percentage of stained cells was determined using a Malassez counting chamber. Cells growth control was performed using the DMEM alone or with DMSO instead of plant

extract. The DMSO concentration in the dilutions and in the solvent control wells was not higher than 1%. All experiments were performed in duplicate. The percentage of proliferation rate was then calculated with respect to not treated cells (100%) using the following formula:

$$\% \text{ of proliferation} = 100 \times \frac{\frac{\text{Living cells}}{\text{Dead cells}} \text{ of treated sample}}{\frac{\text{Living cells}}{\text{Dead cells}} \text{ of untreated control}}$$

### $\alpha$ -glucosidase inhibition assay

The  $\alpha$ -glucosidase enzyme inhibitory assay was performed in a 96-well plate as described by Kumar *et al.* with slight modifications.<sup>[17]</sup> Briefly 15  $\mu$ L of crude extract solution at different concentrations, in 0.1 M phosphate buffer (pH – 6.8), was mixed with 15  $\mu$ L of Baker's yeast  $\alpha$ -glucosidase solution containing 0.5 U/mL in 0.1 M phosphate buffer (pH – 6.8). The mixed solution was incubated at 37°C for 10 min to allow inhibition of the enzyme by the tested extracts or pure compounds. After incubation, 15  $\mu$ L of the substrate, *p*-nitrophenyl  $\alpha$ -D-Glucopyranoside, 0.5 mM solution in 0.1 M phosphate buffer (pH-6.8), was added to the above mixture and incubated at 37°C for 30 min. Then, 100  $\mu$ L of 0.2 M sodium carbonate solution was added to stop the reaction. The absorbance of the solution containing *p*-nitrophenol was measured at 405 nm using a microplate reader. A stock solution of  $\alpha$ -glucosidase with 1 mg/mL (1 mg = 7 U) concentration was prepared in 0.1 M phosphate buffer (pH – 6.8) and diluted to 0.5 U/mL at the time of assay. The extract and fractions were dissolved in DMSO and diluted to desired concentrations with 0.1 M phosphate buffer. The final DMSO concentration was maintained below 2% (v/v), which was found not to have any effect on the enzyme activities. Different concentrations were tested of each crude extract (2, 1, 0.5, 0.4, 0.3, 0.2, and 0.1 mg/mL). The uninhibited enzyme was taken as control. Appropriate blank was used for all the extracts. Acarbose was used as the reference inhibitor of the enzyme. The assay was performed in triplicate. The  $\alpha$ -glucosidase inhibition percentage was calculated as follows:

$$\% \text{ Inhibition} = \frac{\text{Absorbance of control} - \text{Absorbance of sample}}{\text{Absorbance of control}} \times 100$$

### Phospholipase A2 inhibition assay

The inhibitory effect of *C. retrorsa* dichloromethane and methanol extracts was performed. PLA2 (from *Apis mellifera* venom, Sigma-Aldrich) activity was determined colorimetrically in 96-well plates according to the method reported by de Araújo and Radvanyi with slight modifications.<sup>[18]</sup> Different concentrations of each sample were prepared in DMSO (1, 2, 5, and 10 mg/mL). The enzymatic solution was prepared in distilled water

(1 mg/mL). Substrate solution contained L- $\alpha$ - phosphatidylcholine (3.5 mM), NaCl (100 mM), calcium chloride (10 mM), Triton X-100 (7 mM), and phenol red (0.055 mM). The pH is adjusted to 7.6 with 40 mM NaOH solution in a final volume of 100 mL. Briefly, 10  $\mu$ L of different concentrations of each extract was incubated with 1  $\mu$ L of the enzymatic solution for 1 h at 37°C. Then, 200  $\mu$ L of the substrate solution was added. The mixture was incubated for 5 min at 37°C. Colorimetric measurements were made at time 0 and after 5 min and read at 558 nm on a microplate reader. The decrease in the absorbance  $A_{558}$  was proportional to pH change as due to the release of fatty acids in the assay conditions. The inhibition percentage was calculated by comparison with a control experiment (absence of extract) using the following equation:

$$\% \text{ Inhibition} = \left( 1 - \frac{(A_{(P0)} - A_{(P5)})}{(A_{(T0)} - A_{(T5)})} \right) \times 100$$

Where  $A_{(P0)}$  is the absorbance of the product at  $t = 0$  min,  $A_{(P5)}$  is the absorbance of the product at  $t = 5$  min,  $A_{(T0)}$  is the absorbance of the control experiment (DMSO without test sample) at  $t = 0$  min and  $A_{(T5)}$  is the absorbance of the control experiment (DMSO without test sample) at  $t = 5$  min at 558 nm. Triplicate measurements were carried out. Manoalide was used as positive control.

## RESULTS AND DISCUSSION

*C. retrorsa* parts were harvested and then dried at room temperature under shade. The dried leaves, flowers, and stems were macerated with dichloromethane, methanol, and water for 48 h, and decocted with water for 10 min. The obtained mixtures were then filtered and evaporated to dryness under reduced pressure. The antioxidant and antimicrobial activities of all extracts and the cytotoxic activity on Hela cells, anti-inflammatory activity, and anti-diabetic activity of dichloromethane and methanol extracts were then investigated. For the nomenclature, CR refers to the first initials of the plant species, followed by the first initial of the plant part (L for leaves, S for stems, and F for flowers). This letter is followed by the type of extraction (D for decoction and M for maceration). For the latter, it is mentioned the solvent used for the extraction ( $\text{CH}_2\text{Cl}_2$ ,  $\text{CH}_3\text{OH}$ , or  $\text{H}_2\text{O}$ ). The details of the extraction and nomenclature of each extract are summarized in Table 1.

### Antioxidant activity

Free radicals due to physical stress, chemicals, foods, and environmental pollutants may lead to many disorders such as atherosclerosis, arthritis, and many other diseases. Antioxidants by their scavenging capacity are useful for the management of those disorders.<sup>[19]</sup> The large discovery of plant secondary metabolites with an antioxidant potential during the last few decades made medicinal plants researches more valuable.<sup>[20,21]</sup> The antioxidant compounds isolated from the different parts of plants

**Table 1:** Details of procedures used for extraction of *Campanula retrorsa*

Extract	Extraction material	Solvent	Method	Temperature (°C)	Time
CR-L-M-DCM	Dry leaves	Dichloromethane	Maceration	25	48 h
CR-L-M-MeOH		Methanol			
CR-L-M-H <sub>2</sub> O		Water			
CR-L-D-H <sub>2</sub> O	Dry flowers	Water	Decoction	100	10 min
CR-F-M-DCM		Dichloromethane	Maceration	25	48 h
CR-F-M-MeOH		Methanol			
CR-F-M-H <sub>2</sub> O	Dry stems	Water	Decoction	100	10 min
CR-F-D-H <sub>2</sub> O		Water			
CR-S-M-DCM		Dichloromethane			
CR-S-M-MeOH	Methanol				
CR-S-M-H <sub>2</sub> O	Dry stems	Water	Decoction	100	10 min
CR-S-D-H <sub>2</sub> O		Water			

play a major role in reducing the incidence of chronic diseases caused by radicals.<sup>[22]</sup>

DPPH has been widely used to investigate the free radical scavenging activity of antioxidant compounds.<sup>[23]</sup> It is a free radical, stable at room temperature which produces a violet solution in methanol. The reduction of DPPH is monitored by the decrease in its absorbance at 517 nm. In its radical form, DPPH absorbs at 517 nm, but upon reduction by an antioxidant, the absorption disappears.<sup>[24]</sup>

The dichloromethane, methanol, and aqueous extracts of *C. retrorsa* have been tested for their antioxidant activity using DPPH. Vitamin C was used as reference standard. The concentrations tested were 0.3, 0.5, and 1 mg/mL. The solution of DPPH alone in methanol was considered as the negative control with zero inhibition.

The results presented in Figure 1 show a difference in the antioxidant activity between samples.

The extracts prepared by hot water extraction were more active than the extracts prepared at room temperature. These results are in agreement with previous works carried out with other plants, in which the decocted extracts have shown the best antioxidant activity between other macerated ones. It seems that hot water extraction increases the quantity of antioxidant compounds without affecting their activity. Furthermore, it could be contributed to the hydrolysis of glycoside bonds by the heat from phenolic compounds, resulting an increase of phenolic hydroxyl groups and antioxidant activity.<sup>[21,25]</sup>

The more potent activity was for the decocted leaves extract. It was comparatively relative with the radical scavenging activity (RSA) of Vitamin C standard. Decocted extracts have shown the best in comparison with other samples, in which 0.3 mg/mL of the leaves decocted extract inhibits about 94% of the DPPH solution after 30 min. This result is similar to the inhibition shown by the Vitamin C standard.

All aqueous extracts have shown a good antioxidant activity. These results are correlated with other studies where higher antioxidant activity was obtained in polar plant extracts.<sup>[26,27]</sup> This can be due to polyphenols, flavones, and flavonoids known to have antioxidant activity.<sup>[28,29]</sup>

All the dichloromethane crude extracts showed a weak antioxidant activity (RSA ~50%). This may be explained by the lack of hydrogen-donating capacity of compounds extracted. Previous studies demonstrated that the interaction between an antioxidant and the radical DPPH depends on its structural conformation. The number of DPPH molecules that are reduced seems to be correlated with the number of available hydroxyl groups.<sup>[24,30]</sup> In summary, the results showed that the polarity of the extracts strongly influences the antioxidant activity.

Methanol crude extracts of different parts of *C. retrorsa* have shown a moderate antioxidant activity. This is in agreement with a previous study where the methanol extract of aerial parts of this species showed a scavenging activity about seven times lower than the standard.<sup>[9]</sup>

To our knowledge, no studies on DPPH scavenging activity of *Campanula retrorsa* extracts been previously reported.

This scavenging activity may be due to flavonoids and anthocyanin previously isolated from different species of *Campanula* genus and reported for their antioxidant activity such as kaempferol and rhamnetin.<sup>[31,32]</sup>

### Antimicrobial assay

Natural substances are usually evaluated for their antimicrobial activity by the agar-diffusion techniques for they are inexpensive and easy methods for determining antibacterial activity against pathogenic bacterial and fungal strains.<sup>[33,34]</sup>

In this study, the hole-plated diffusion method was used to serve as a screening procedure for *C. retrorsa* crude extracts against *S. aureus*, *B. cereus*, *E. faecium*, *E. coli*, *P. aeruginosa*, *Acinetobacter baumannii* and *C. albicans*. Dichloromethane and methanol extracts were dissolved in DMSO, while aqueous ones were dissolved in water.

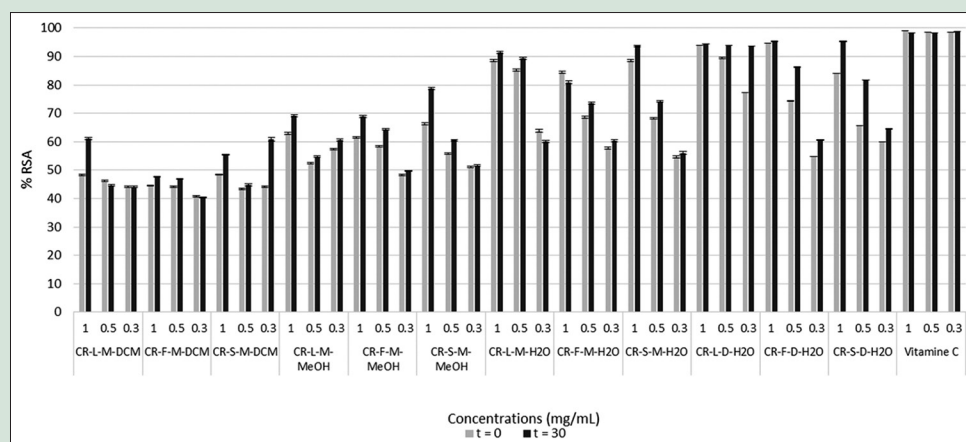
The diameters of the inhibition zones obtained with *C. retrorsa* active crude extracts are presented in Table 2.

Screening of the antimicrobial activity of the extracts revealed a moderate activity by the dichloromethane extracts against *A. baumannii*. Previous

**Table 2:** Antimicrobial effects of *Campanula retrorsa* active crude extracts

Code	Strains			
	Gram-Bacteria		Yeast	
	<i>Acinetobacter baumannii</i>		<i>Candida albicans</i>	
	CMUL 271	ATCC 10,231		
Concentration (mg/mL)	2	10	2	10
CR-L-M-DCM	+	++	~	~
CR-L-M-MeOH	-	+	-	+
CR-F-M-DCM	-	-	-	~
CR-F-M-MeOH	-	+	-	~
CR-S-M-MeOH	~	+	-	-

CMUL: Microbiological Collection of the Lebanese University; ATCC: American Type Culture Collection; -: No antimicrobial activity, i.z. of sample 1 mm; ~: Slight antimicrobial activity, i.z. of sample 1-2 mm; +: Moderate antimicrobial activity, i.z. of sample 3-4 mm; ++: Clear antimicrobial activity, i.z. of sample 5-10 mm



**Figure 1:** DPPH radical scavenging activity of the extracts and Vitamin C. All values are expressed as mean of triplicate ± standard division

studies on plant extracts have shown that plant extracts are more active against Gram-positive bacteria than against Gram-negative bacteria.<sup>[35,36]</sup> While in this study, the dichloromethane crude extracts of *C. retrorsa* and especially the leaves dichloromethane extract have inhibited the growth of the Gram-negative strain *A. baumannii*.

In addition, *C. albicans* was slightly inhibited by the dichloromethane and methanol crude extracts of *C. retrorsa* leaves and flowers at 10 mg/mL.

On the other hand, methanol and aqueous crude extracts of *C. retrorsa* failed to inhibit the growth of the bacterial or fungal isolates tested in the present study at any of the employed concentration. This may be due to the fact that most compounds that have been identified active against antimicrobial strains are not water soluble.<sup>[34,37]</sup>

The results of this present study are in strong agreement with what has been reported earlier on antimicrobial activity of aqueous crude extracts of some of *Campanula* species such as *Campanula americana* L., *Campanula rapunculoides* L., and *Campanula rotundifolia* L.<sup>[38]</sup>

However, this is the first study to demonstrate that dichloromethane extracts of *C. retrorsa* contain antimicrobial substances with antibacterial and anticandidal effects. Further studies can be subjected on the leaves dichloromethane extract to isolate the therapeutic antimicrobial compounds.

### Cytotoxic assay

Dye exclusion is a simple and rapid technique for measuring cell viability. In order to evaluate the cytotoxic effects of *C. retrorsa* dichloromethane and methanol extracts, cell viability experiments were performed on Hela cell line. Cells were incubated 24 h and 48 h with the extracts previously dissolved in DMEM, at final concentrations of 5 and 2 mg/mL. Figure 2 shows the cytotoxic effects of dichloromethane and methanol crude extracts on Hela cells. Cell survival analyses indicated that *C. retrorsa* extracts caused growth inhibition of Hela cells in time-dependent manner. All extracts showed a better inhibition of Hela cells at 48 h than the inhibition at 24 h. While, an inhibition of cell growth was remarked in a dose-dependent manner only in the flower methanol extract, in which cell viabilities decreased significantly from 92% at 2 mg/mL to 27% at 5 mg/mL after 24 h of treatment. Leaf and stem extracts showed the most cytotoxic activity at 2 mg/mL with 90% of cell growth inhibition. This remarkable inhibition may be due to a large variety of polyphenols previously reported in other species of *Campanula* genus such as chlorogenic acid, kaempferol, quercetin, isoquercitrin, and astragalin.<sup>[39-42]</sup> Those are well known for their anticancer potency.<sup>[43-50]</sup> From the above, we can see that *C. retrorsa* could be a promoting plant for further studies investigating cytotoxic compounds.

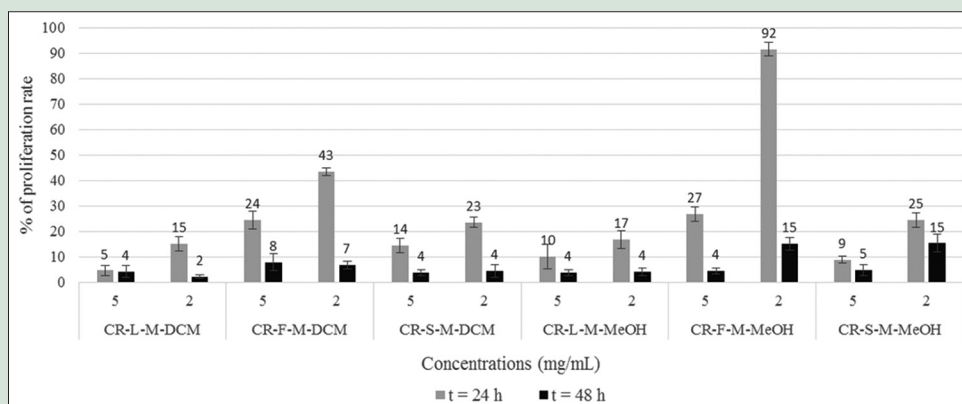
### $\alpha$ -Glucosidase inhibition assay

According to many *in vivo* studies, inhibition of  $\alpha$ -glucosidase is believed to be one of the most effective approaches for diabetes care.<sup>[51-53]</sup>  $\alpha$ -glucosidase (EC 3.2.1.20) catalyzes the final step of the digestive process of carbohydrates acting upon 1,4- $\alpha$  bonds and giving as a result glucose.<sup>[54]</sup> Synthetic  $\alpha$ -glucosidase inhibitors may cause several side effects such as meteorism, abdominal distention, cholestasis, hypoglycemia, and flatulence.<sup>[55]</sup> Hence, it is essential to find new effective natural compounds having no or fewer side effects to regulate the blood glucose level. The dichloromethane and methanol extracts of *C. retrorsa* have been evaluated for their activity against  $\alpha$ -glucosidase for the first time. Acarbose was used as reference standard. The concentrations tested were 2, 1, 0.5, 0.4, 0.3, 0.2, and 0.1 mg/mL. The mixture of the enzyme and the substrate alone was considered as the negative control with zero inhibition. The results showed that most of the extracts were not capable of inhibiting the activity of  $\alpha$ -glucosidase. Dichloromethane and methanol stems crude extracts showed, respectively, a 20% and 13% inhibition of the enzyme  $\alpha$ -glucosidase at 2 mg/mL. The inhibition rate of these two extracts can be considered a good sign for the anti-diabetic activity because, as crude extracts, they are constituted of a large number of secondary metabolites. The active compound/compounds may be present in low quantities in the mixture, so further purification of these two extracts is required to be able to characterize the active molecules.

To our knowledge, this is the first study to evaluate the anti-diabetic effect of *C. retrorsa* crude extracts.

### Phospholipase A2 inhibition assay

PLA2 is an enzyme that catalyzes the hydrolysis of esters of phospholipids to produce free fatty acids and lysophospholipids.<sup>[56]</sup> The released fatty acids initiate the biosynthesis of eicosanoids, such as prostaglandins, thromboxanes, and leukotrienes, which are known to mediate inflammation.<sup>[57]</sup> Thus, PLA2 inhibitors have been targeted as potential therapeutic agents in the treatment of inflammation. Many of these inhibitors have been isolated from plants crude extracts such as Manoalide and Halenaquinone.<sup>[56,58]</sup> The dichloromethane and methanol extracts of *C. retrorsa* have been evaluated for activity against bee venom PLA2. Manoalide was used as reference standard. The concentrations tested were 10, 5, 2, and 1 mg/mL. The mixture of DMSO alone with the enzyme and the substrate was considered as the negative control with zero inhibition. The results showed that all the tested extracts were inactive, and no inhibition of PLA2 was detected at any of the tested concentrations. This may be due to the fact that compounds with interesting activities are often present in very low amounts in plant crude extracts.<sup>[59]</sup>



**Figure 2:** Cytotoxic activity on Hela cells of the extracts. All values are expressed as mean of duplicate  $\pm$  standard division

Nevertheless, this is the first study to evaluate the anti-inflammatory potency of *C. retrorsa* crude extracts.

## CONCLUSION

The data of our present study showed that all aqueous crude extracts of *C. retrorsa* have significant antioxidant activity. Decocted leaves extract have the best DPPH scavenging activity at all the tested concentration. The results clearly show that *C. retrorsa* extracts are a significant natural source of antioxidants.

Among all the crude extracts, only the dichloromethane leaves extracts of *C. retrorsa* have shown a moderate antimicrobial activity against *A. baumannii* and *C. albicans*. All dichloromethane and methanol extracts, except the flowers methanol extract, displayed promising cytotoxic effects on Hela cells after 48 h of treatment at 2 mg/mL.

Dichloromethane and methanol have exhibited no anti-inflammatory activity. While the dichloromethane and methanol stems crude extracts showed a moderate inhibition of the enzyme  $\alpha$ -glucosidase at 2 mg/mL. Further studies focused on the elucidation and characterization of active compounds of the promising extracts are required.

## Acknowledgments

The authors would like to thank the Lebanese University for the financial support of this project. The authors thank also Professors Georges and Henriette Tohme for the taxonomic identification.

The authors would like to thank Professor Monzer Hamzé (Director of the Health and Environment Microbiology laboratory at Azm Centre for Research on Biotechnology Sciences and its applications, Doctoral School for Sciences and Technology, Lebanese University, Tripoli, Lebanon) and his team for their assistance in carrying out antibacterial tests and antifungal agents. The authors would like to thank Dr. Zeina DASSOUKI for providing Hela cells and for her assistance in the cytotoxic assay.

## Financial support and sponsorship

This study was financially supported by Lebanese University.

## Conflicts of interest

There are no conflicts of interest.

## REFERENCES

- Tohmé G, Tohmé H. Illustrated Flora of Lebanon. Beirut: CNRS Publications; 2007.
- Brandt K, Ishimaru K. *Campanula* (bellflower) species: *In vitro* culture, micropropagation, and the production of anthocyanins, polyacetylenes, and other secondary metabolites. In: Medicinal and Aromatic Plants X. Berlin, Heidelberg: Springer; 1998. p. 45-66.
- Contandriopoulos J. In: Grant GF. Differentiation and Evolution of the Genus *Campanula* in the Mediterranean Region. Toronto, Academic Press: Plant Biosystematics; 1984.
- Georges Tohme HT. Illustrated Flora of Lebanon. 2<sup>nd</sup> ed. Beirut, Lebanon: CNRS Lebanon; 2014. p. 610.
- Rameau JC, Mansion D, Dumé G, Timbal J, Lecointe A, Dupont P *et al.* French Forest Flora. Illustrated Ecological Guide. Tome 1. Paris: Plaines et Collines. Institut Pour le Développement Forestier; 1989.
- Okinaka Y, Shimada Y, Nakano-Shimada R, Ohbayashi M, Kiyokawa S, Kikuchi Y. Selective accumulation of delphinidin derivatives in tobacco using a putative flavonoid 3', 5'-hydroxylase cDNA from *Campanula medium*. Biosci Biotechnol Biochem 2003;67:161-5.
- Morton JF. Major Medicinal Plants: Botany, Culture and Uses. Scientific American; 1977.
- Assiri AM, Ramadan MF, Alshmy H, Morsel JT. Bioactive compounds and antiradical potential of *Campanula medium* lipids. Chem Nat Comp 2014;50:1088-91.
- Jaradat NA, Abualhasan M. Comparison *in vitro* of antioxidant activity between fifteen *Campanula* Species (Bellflower) from palestinian flora. Pharm J 2015;7:276-9.
- Pieroni A. Medicinal plants and food medicines in the folk traditions of the upper Lucca Province, Italy. J Ethnopharmacol 2000;70:235-73.
- Teslov L, Teslov S. Cynaroside and luteolin from *Campanula persicifolia* and *C. rotundifolia*. Chem Nat Comp 1972;8:117.
- Teslov L, Blinova K. A new flavone glycoside from *Campanula patula*. Chem Nat Comp 1974;10:93.
- Dzhumyrko S. Flavonoids of species of the genus *Campanula*. Chem Nat Comp 1985;21:531-2.
- Chandini SK, Ganesan P, Bhaskar N. *In vitro* antioxidant activities of three selected brown seaweeds of India. Food Chem 2008;107:707-13.
- Yen GC, Chen HY. Antioxidant activity of various tea extracts in relation to their antimutagenicity. J Agr Food Chem 1995;43:27-32.
- Alhage J, Elbatar H, Taha S, Guegan JP, Dassouki Z, Vives T, *et al.* Isolation of bioactive compounds from *Calicotome villosa* stems. Molecules 2018;23:851.
- Kumar D, Kumar H, Vedasiromoni J, Pal BC. Bio-assay guided isolation of  $\alpha$ -glucosidase inhibitory constituents from *Hibiscus mutabilis* Leaves. Phytochem Anal 2012;23:421-5.
- Lôbo de Araújo A, Radvanyi F. Determination of phospholipase A2 activity by a colorimetric assay using a pH indicator. Toxicol 1987;25:1181-8.
- Pourmorad F, Hosseinimehr S, Shahabimajid N. Antioxidant activity, phenol and flavonoid contents of some selected Iranian medicinal plants. Afr J Biotechnol 2006;5:1142-5.
- Aderogba M, Kgate DT, McGaw LJ, Eloff JN. Isolation of antioxidant constituents from *Combretum apiculatum* Subsp. *Apiculatum*. S Afr J Bot 2012;79:125-31.
- Petlevski R, Flajs D, Kalodera Z, Končić MZ. Composition and antioxidant activity of aqueous and ethanolic *Pelargonium radula* extracts. S Afr J Bot 2013;85:17-22.
- Miller HE, Rigelhof F, Marquart L, Prakash A, Kanter M. Antioxidant content of whole grain breakfast cereals, fruits and vegetables. J Am Coll Nutr 2000;19:312S-319S.
- Molyneux P. The use of the stable free radical diphenylpicrylhydrazyl (DPPH) for estimating antioxidant activity. Songklanakarin J Sci Technol 2004;26:211-9.
- Brand-Williams W, Cuvelier M-E, Berset C. Use of a free radical method to evaluate antioxidant activity. LWT-Food Sci Technol 1995;28:25-30.
- Ferreira A, Proença C, Serralheiro ML, Araújo ME. The *in vitro* screening for acetylcholinesterase inhibition and antioxidant activity of medicinal plants from Portugal. J Ethnopharmacol 2006;108:31-7.
- Shon MY, Kim TH, Sung NJ. Antioxidants and free radical scavenging activity of *Phellinus baumii* (*Phellinus* of *Hymenochaetaceae*) extracts. Food Chem 2003;82:593-7.
- Tepe B, Daferera D, Sokmen A, Sokmen M, Polissiou M. Antimicrobial and antioxidant activities of the essential oil and various extracts of *Salvia tomentosa* Miller (*Lamiaceae*). Food Chem 2005;90:333-40.
- Cao G, Sofic E, Prior RL. Antioxidant and prooxidant behavior of flavonoids: Structure-activity relationships. Free Radic Biol Med 1997;22:749-60.
- Lien EJ, Ren S, Bui HH, Wang R. Quantitative structure-activity relationship analysis of phenolic antioxidants. Free Radic Biol Med 1999;26:285-94.
- Mensor LL, Menezes FS, Leitão GG, Reis AS, dos Santos TC, Coube CS, *et al.* Screening of Brazilian plant extracts for antioxidant activity by the use of DPPH free radical method. Phytother Res 2001;15:127-30.
- Dzhumyrko S. Flavonoids of plants of the genus *Campanula*. Chem Nat Comp 1973;9:262-3.
- Jiang H, Zhan WQ, Liu X, Jiang SX. Antioxidant activities of extracts and flavonoid compounds from oxytropis *Falcata bunge*. Nat Prod Res 2008;22:1650-6.
- Ojala T, Remes S, Haansuu P, Vuorela H, Hiltunen R, Haatela K, *et al.* Antimicrobial activity of some coumarin containing herbal plants growing in Finland. J Ethnopharmacol 2000;73:299-305.
- Al-Hadhrani RM, Hossain MA. Evaluation of antioxidant, antimicrobial and cytotoxic activities of seed crude extracts of *Ammi majus* grown in Oman. Egypt J Basic Appl Sci 2016;3:329-34.
- Rabe T, Van Staden J. Antibacterial activity of South African plants used for medicinal purposes. J Ethnopharmacol 1997;56:81-7.
- Parekh J, Jadeja D, Chanda S. Efficacy of aqueous and methanol extracts of some medicinal plants for potential antibacterial activity. Turk J Biol 2006;29:203-10.
- Graham SW, Reeves PA, Burns AC, Olmstead RG. Microstructural changes in noncoding chloroplast DNA: Interpretation, evolution, and utility of indels and inversions in basal angiosperm phylogenetic inference. Int J Plant Sci 2000;161:S83-96.
- Borchardt JR, Wyse DL, Sheaffer CC, Kauppi KL, Ehlke RG, Biesboer DD, *et al.* Antimicrobial activity of native and naturalized plants of Minnesota and Wisconsin. J Med Plants Res 2008;2:98-110.
- Teslov LS, Geras'kina SS. Phytochemical and Pharmacological Study of

- Preparations from *Campanula cephalates* and *Campanula glomerata*. Tomsk Univ; 1975.
40. Nung VN, Bezanger-Beauquesne L, Torck M. Characterization of flavonoids. *Plant Med Phytother* 1971;5:177-87.
  41. Teslov LS, Podushkin VY. Flavonoids of *Campanula maleevii*. *Khim Prir Soedin* 1988;2:298.
  42. Cuendet M, Potterat O, Hostettmann K. Flavonoids and phenylpropanoid derivatives from *Campanula barbata*. *Phytochemistry* 2001;56:631-6.
  43. Zhou W, Kallifatidis G, Baumann B, Rausch V, Mattern J, Gladkich J, *et al.* Dietary polyphenol quercetin targets pancreatic cancer stem cells. *Int J Oncol* 2010;37:551-61.
  44. Tang SN, Singh C, Nall D, Meeker D, Shankar S, Srivastava RK, *et al.* The dietary bioflavonoid quercetin synergizes with epigallocatechin gallate (EGCG) to inhibit prostate cancer stem cell characteristics, invasion, migration and epithelial-mesenchymal transition. *J Mol Signal* 2010;5:14.
  45. Zhang FH, Yan YL, Wang Y, Liu Z. Lactucin induces potent anti-cancer effects in HL60 human leukemia cancer cells by inducing apoptosis and sub-G1 cell cycle arrest. *Bangladesh J Pharm* 2016;11:478-84.
  46. Jo E, Park SJ, Choi YS, Jeon WK, Kim BC. Kaempferol suppresses transforming growth factor- $\beta$ 1-induced epithelial-to-mesenchymal transition and migration of A549 lung cancer cells by inhibiting Akt1-mediated phosphorylation of Smad3 at threonine-179. *Neoplasia* 2015;17:525-37.
  47. Kim SH, Choi KC. Anti-cancer effect and underlying mechanism(s) of kaempferol, a phytoestrogen, on the regulation of apoptosis in diverse cancer cell models. *Toxicol Res* 2013;29:229-34.
  48. Naso LG, Valcarcel M, Roura-Ferrer M, Kortazar D, Salado C, Lezama L, *et al.* Promising antioxidant and anticancer (human breast cancer) oxidovanadium (IV) complex of chlorogenic acid. Synthesis, characterization and spectroscopic examination on the transport mechanism with bovine serum albumin. *J Inorg Biochem* 2014;135:86-99.
  49. Kang TY, Yang HR, Zhang J, Li D, Lin J, Wang L, *et al.* The studies of chlorogenic acid antitumor mechanism by gene chip detection: The immune pathway gene expression. *J Anal Methods Chem* 2013;2013:617243.
  50. Amado NG, Predes D, Fonseca BF, Cerqueira DM, Reis AH, Dudenhoefter AC, *et al.* Isoquercitrin suppresses colon cancer cell growth *in vitro* by targeting the wnt/ $\beta$ -catenin signaling pathway. *J Biol Chem* 2014;289:35456-67.
  51. Etxeberria U, de la Garza AL, Campión J, Martínez JA, Milagro FI. Antidiabetic effects of natural plant extracts via inhibition of carbohydrate hydrolysis enzymes with emphasis on pancreatic alpha amylase. *Expert Opin Ther Targets* 2012;16:269-97.
  52. van de Laar FA. Alpha-glucosidase inhibitors in the early treatment of Type 2 diabetes. *Vasc Health Risk Manag* 2008;4:1189-95.
  53. Chegade JM, Mooradian AD. A rational approach to drug therapy of Type 2 diabetes mellitus. *Drugs* 2000;60:95-113.
  54. Tundis R, Loizzo MR, Menichini F. Natural products as alpha-amylase and alpha-glucosidase inhibitors and their hypoglycaemic potential in the treatment of diabetes: An update. *Mini Rev Med Chem* 2010;10:315-31.
  55. Monami M, Luzzi C, Lamanna C, Chiasserini V, Addante F, Desideri CM, *et al.* Three-year mortality in diabetic patients treated with different combinations of insulin secretagogues and metformin. *Diabetes/Metab Res Rev* 2006;22:477-82.
  56. Potts BC, Faulkner DJ, Jacobs RS. Phospholipase A2 inhibitors from marine organisms. *J Nat Prod* 1992;55:1701-17.
  57. Motti CA, Bourguet-Kondracki ML, Longeon A, Doyle JR, Llewellyn LE, Tapiolas DM, *et al.* Comparison of the biological properties of several marine sponge-derived sesquiterpenoid quinones. *Molecules* 2007;12:1376-88.
  58. Longeon A, Copp BR, Roué M, Dubois J, Valentin A, Petek S, *et al.* New bioactive halenaquinone derivatives from south pacific marine sponges of the genus *Xestospongia*. *Bioorg Med Chem* 2010;18:6006-11.
  59. Atanasov AG, Waltenberger B, Pferschy-Wenzig EM, Linder T, Wawrosch C, Uhrin P, *et al.* Discovery and resupply of pharmacologically active plant-derived natural products: A review. *Biotechnol Adv* 2015;33:1582-614.